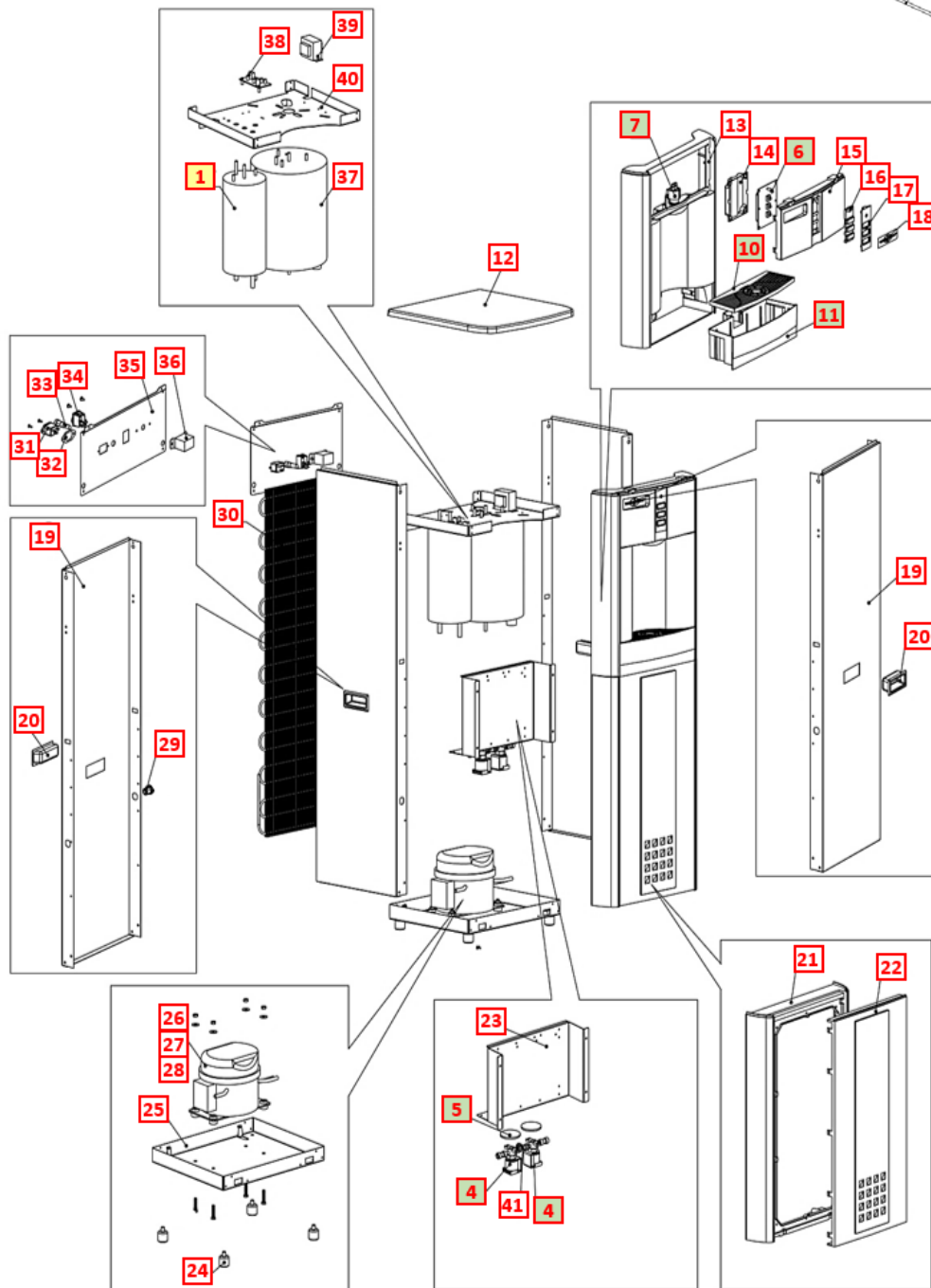
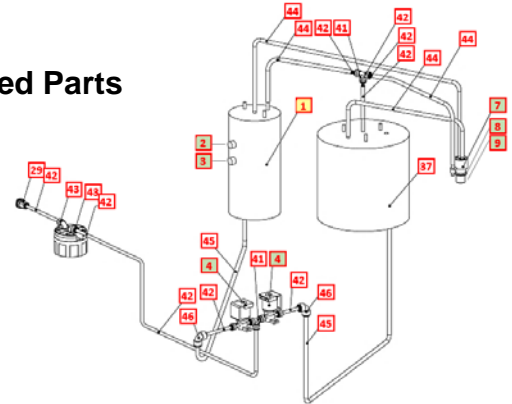


WL100 TOWER DRAWING AND PARTS LIST

Yellow = Consumables
Green = Recommended spare parts

Wetted Parts



No	WLCP Part No.	Description	Part No	Stocked?	
Consumables					
1	12-5615	Hot Tank 1.6 Liter 100V / 500W Factory Set Point 87°C (189°F)	HT-3041	Yes	
Not Shown	FT-0035	GAC Filter - 10" Carbon Activated Inline Filter Optional Filter Element PN FT-0038	FT-0035-IL-WLT	Yes	
Not Shown	FT-0063	Carbon Block 1-micron 10" Inline CBC Filter for CTO, Lead, Cyst and Asbestos Reduction Optional Filter Element PN FT-0064	FT-0063-IL-WLT	Yes	
Not Shown	FT-0053	Sediment Filter - 10" Sediment 20 Micron Inline Filter -Optional Filter Element FT-0055	FT-0053-IL-WLT	Yes	
Recommended Spare Parts					
1.1	12-6900	Thermostat and Overload Metal Cover <i>Recommend stocking 2 each for every 10 units purchased</i>	ST-8290	Yes	
2	12-1360	Overload with Manual Reset 105° C (221° F) <i>Recommend stocking 2 each for every 10 units purchased</i>	HT-3012	Yes	
3	12-1303	Hot Tank Thermostat 87°C (189° F) <i>Recommend stocking 2 each for every 10 units purchased</i>	HT-3013A	Yes	
4	12-5665	Solenoid Valve with Terminal at Outlet Position <i>Recommend stocking 5 each for every 10 units purchased</i>	PU-4164-L00-00	Yes	
5	CU-0001	Solenoid Cushion <i>Recommend stocking 5 each for every 10 units purchased</i>	CU-0001	Yes	

6	20-0040	Display PCB <i>Recommend stocking 2 each for every 10 units purchased</i>	EN-6130	Yes	
7	10-2700	Faucet Assembly <i>Recommend stocking 2 each for every 10 units purchased</i>	PL-1011	Yes	
8	10-2600	Natural Faucet O-Ring – Silicon White <i>Recommend stocking 2 each for every 10 units purchased</i>	CT-2007	Yes	
9	10-3048	Faucet Nipple – Blue with Screen <i>Recommend stocking 2 each for every 10 units purchased</i>	PL-1013	Yes	
10	20-1040	Drip Tray Grill Charcoal <i>Recommend stocking 5 each for every 10 units purchased</i>	PL-1362-L00-00	Yes	
	20-0065	Drip Tray Grill – Blue <i>Recommend stocking 5 each for every 10 units purchased</i>	PL-1362	Yes	
11	20-1035	Drip Tray Body – No Logo <i>Recommend stocking 5 each for every 10 units purchased</i>	PL-1361-L00-CL	Yes	
	20-0070	Drip Tray Body – Blue No Logo <i>Recommend stocking 5 each for every 10 units purchased</i>	PL-1361	Yes	
Remainder of Parts					
12	20-1045	Top Cover Flat - Charcoal Textured	PL-1366-L00-CL	Yes	
	20-0005	Top Cover Flat – Blue	PL-1366	Yes	
13	20-0030	Front Upper Drip Tray Insert Panel - - <i>when purchasing, also request Hot Water Caution Label LP-7169 / 12-0001 to adhere to front of this Panel.</i>	PL-1365	Yes	
13.1	12-0001	Hot Water Caution Label – Adhere to Front Upper Drip Tray Insert Panel.	LP-7169	Yes	

14	20-0035	Front PCB Cover	PL-1369	Yes	
15	20-1050	Front Upper Insert Panel - Charcoal	PL-1367-L00-CL-BIO	Yes	
	20-0045	Front upper Insert Panel – Blue	PL-1367	Yes	
16	20-0050	Silicon Button Key mat	PL-1370	Yes	
17	20-0055	Button PCB Insert Panel - Silver	PL-1368	Yes	
18	20-1030	WL100 Label – Front Upper Insert Panel - Charcoal	LP-0269-L00-00	Yes	
	20-0060	WL100 Label – Front Upper Insert Panel - Blue	LP-7292	Yes	
19	20-0010	Side Panel - Tower Only	ST-8249-A	Yes	
20	12-8058	Side Panel Plastic Handle - Tower Only	PL-1123	Yes	
21	20-0025	Front Lower Panel Tower Only	PL-1364	Yes	
22	20-1055	Front Lower Insert Panel - Charcoal Tower Only	PL-1363-L00-CL	Yes	
	20-0020	Front Lower Insert Panel - Blue Tower Only	PL-1363	Yes	
23	20-0015	Filter Fixing Bracket - Tower Only	ST-8138-B	Yes	

24	10-3083	Unit Control Rubber Feet - Tower Only	ST-8167-CN	Yes	
25	20-0015	Bottom Tray- Tower Only	ST-8137-A	Yes	
26	NA	Compressor 120V / 60Hz	CO-9045	Special Order	
27	10-3003	Compressor Starter Relay	CO-9016	Yes	
28	10-5018	Compressor Overload	CO-9015	Yes	
29	10-3067	Bulkhead Union ¼" x ¼" John Guest P/N PI1208S	PU-4028-A	Yes	
30	12-8102	Wire Condenser - Tower Only	CO-9027	Special Order	
31	19-1090	Socket for Plug Connection	EL-5029	Yes	
32	19-1015	Gasket for Power Socket	ST-8052	Yes	
33	10-3014	Fuse Holder and Fuse 120V / 15A with One Wire	EL-5053	Yes	
33.1	10-3013	Fuse 120V / 15A	EL-5010	Yes	
34	12-5600	Red Heater and Compressor Switch	EL-5019-A	Yes	
35	12-5673	Back Panel Tower Only	ST-8135-A	No	

36	19-1069	Cold Tank Thermostat	CT-2070	Yes	
36.1	LP-0326	Cold Adjustment Cover Label	LP-0326-L00-00	Yes	
37	NA	2 Liter Cold Tank Tower Only	CT-2087	Special Order	
38	20-0075	Energy Saver PCB	EN-6131	Yes	
38.1	20-1005	Jumper Pin	EN-6082	Yes	
38.2	10-3017	Plastic PCB Support	EN-6059	Yes	
39	12-1200	Power Transformer 120V / 60Hz	EL-5021	Yes	
40	12-8003	Upper Shelf - Tower Only	ST-8136-A	Yes	
41	Purchase from John Guest	1/4" Union Tee John Guest P/N P10208S	PU-4011-A	No	
42	Purchase from John Guest	JG LLD PE Tube - Blue O.D.1/4" John Guest P/N PE-08-BI-1000F-B	PU-4031-A	No	
43	Purchase from John Guest	1/4" Union Elbow John Guest P/N P10308S	PU-4008-A	No	
44	10-7040	Silicon Tube 5/16" for Hot Water	PU-4064	Yes	
45	10-3062	JG LLDPE Tube - Blue 8mm (PE-0806-100M-B)	PU-4014	Yes	

46	Purchase from John Guest	5/16" X 1/4" Reducing Elbow John Guest P/N PI211008S	PU-4007-A	No	
Not Shown	12-5252	Wire Harness Set	EL-5057-CN	Yes	
Not Shown	NA	Solenoid Valve Harness 1000mm	EL-5119	Special Order	
Not shown	NA	Wire Connector between Hot Tank and Thermostat	EL-5142	Special Order	
Not shown	10-3099	2 1/2" Filter Clip - Tower Only	PU-4024	Yes	
Not shown	10-3098	2" Filter Clip for In-Line Filter	PU-4025	Yes	
Not Shown	10-3007	Power Cord – 120V	EL-5001-B	Yes	