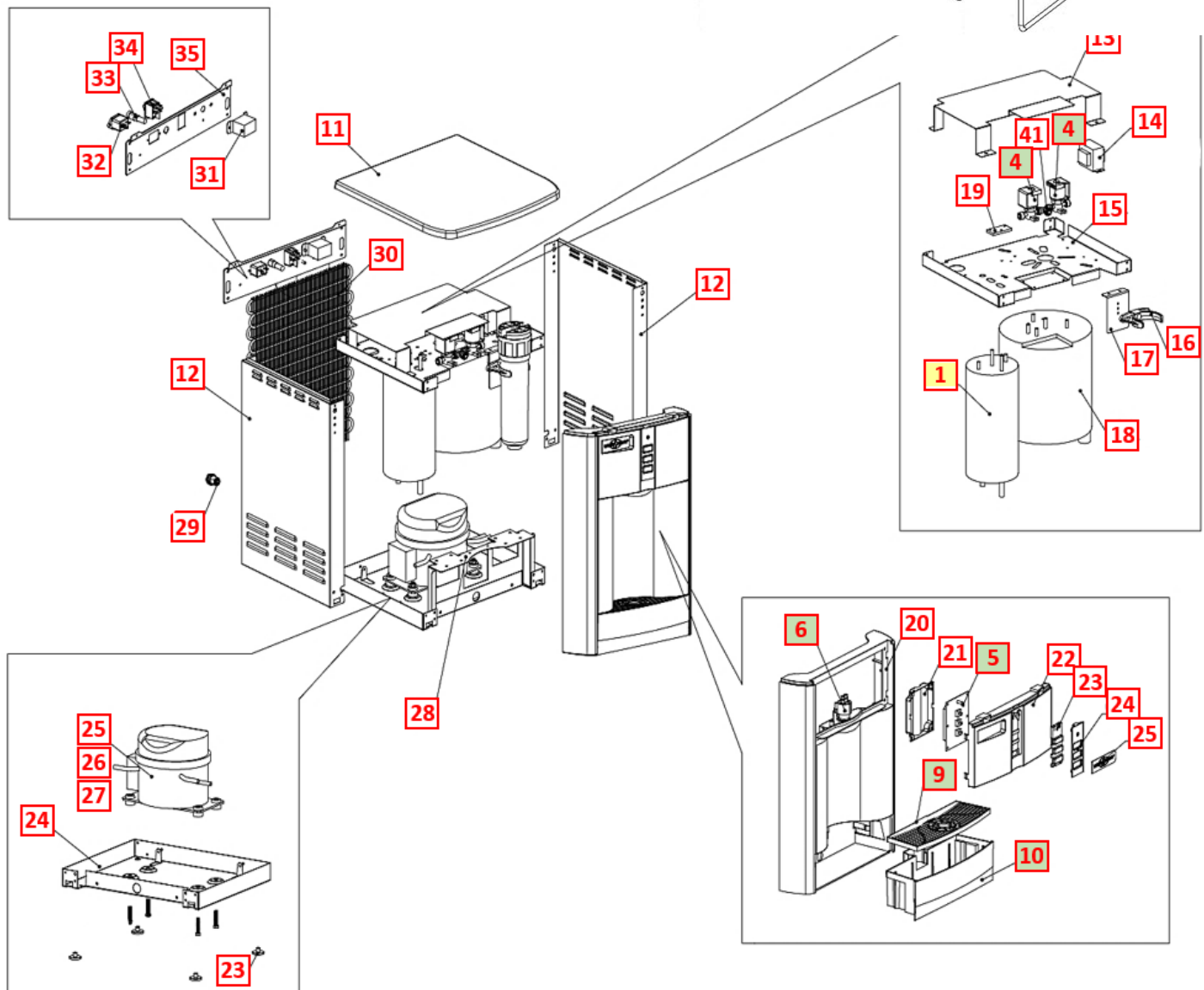
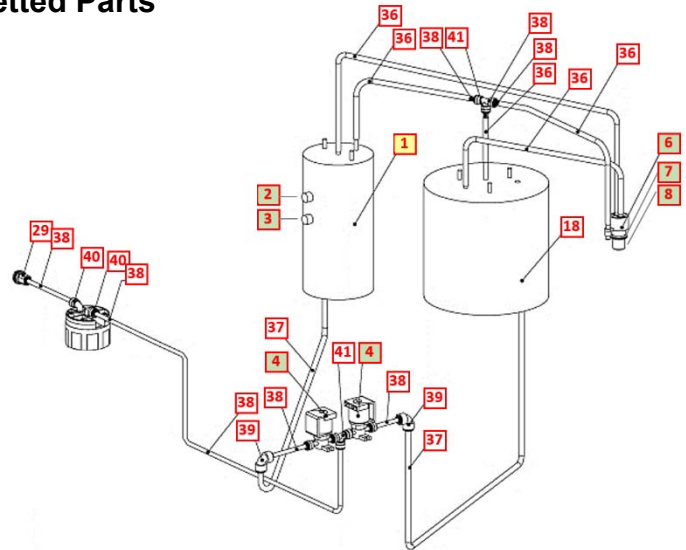


WL100 COUNTER TOP DRAWINGS AND PARTS LIST

Yellow = Consumables
Green = Recommended spare parts

Wetted Parts



No	WLCP Part No.	Description	Part No	Stocked?	
Consumables					
1	12-5615	Hot Tank 1.6 Liter 100V / 500W Factory Set Point 87°C (189°F)	HT-3041	Yes	
Not Shown	FT-0035	GAC Filter - 10" Carbon Activated Inline Filter Optional Filter Element PN FT-0038	FT-0035-IL-WLT	Yes	
Not Shown	FT-0063	Carbon Block 1-micron 10" Inline CBC Filter for CTO, Lead, Cyst and Asbestos Reduction Optional Filter Element PN FT-0064	FT-0063-IL-WLT	Yes	
Not Shown	FT-0053	Sediment Filter - 10" Sediment 20 Micron Inline Filter -Optional Filter Element FT-0055	FT-0053-IL-WLT	Yes	
Recommended Spare Parts					
1.1	12-6900	Thermostat and Overload Metal Cover <i>Recommend stocking 2 each for every 10 units purchased</i>	ST-8290	Yes	
2	12-1360	Overload with Manual Reset - 105°C (221°F) <i>Recommend stocking 2 each for every 10 units purchased</i>	HT-3012	Yes	
3	12-1303	Hot Tank Thermostat - 87°C (189°F) <i>Recommend stocking 2 each for every 10 units purchased</i>	HT-3013A	Yes	
4	12-5665	Solenoid Valve with Terminal at Outlet Position <i>Recommend stocking 5 each for every 10 units purchased</i>	PU-4164-L00-00	Yes	
4.1	CU-0001	Solenoid Cushion <i>Recommend stocking 5 each for every 10 units purchased</i>	CU-0001	Yes	
5	20-0040	Display PCB <i>Recommend stocking 2 each for every 10 units purchased</i>	EN-6130	Yes	

6	10-2700	Faucet Assembly <i>Recommend stocking 2 each for every 10 units purchased</i>	PL-1011	Yes	
7	10-2600	Natural Faucet O-Ring – Silicon White <i>Recommend stocking 2 each for every 10 units purchased</i>	CT-2007	Yes	
8	10-3048	Faucet Nipple – Blue with Screen <i>Recommend stocking 2 each for every 10 units purchased</i>	PL-1013	Yes	
9	20-1040	Drip Tray Grill Charcoal <i>Recommend stocking 5 each for every 10 units purchased</i>	PL-1362-L00-00	Yes	
	20-0065	Drip Tray Grill – Blue <i>Recommend stocking 5 each for every 10 units purchased</i>	PL-1362	Yes	
10	20-1035	Drip Tray Body – Charcoal No Logo <i>Recommend stocking 5 each for every 10 units purchased</i>	PL-1361-L00-CL	Yes	
	20-0070	Drip Tray Body – Blue No Logo <i>Recommend stocking 5 each for every 10 units purchased</i>	PL-1361	Yes	
Remainder of Parts					
11	20-1045	Top Cover Flat - Charcoal Textured	PL-1366-L00-CL	Yes	
	20-0005	Top Cover Flat – Blue	PL-1366	Yes	
12	12-5675	Side Panel – Counter Top only	ST-8148-A	Yes	
13	NA	High Voltage Cover Counter Top Only	ST-8301	No	
14	12-1200	Power Transformer 120V / 60Hz	EL-5021	Yes	
15	12-3165	Upper Shelf Counter Top Only	ST-8150-B	Yes	

16	10-3099	2 ½" Filter Clip for In-Line Filter	PU-4024	Yes	
17	20-1015	Filter Bracket Counter Top Only	ST-8326	Yes	
18	NA	2 Liter Cold Tank Countertop Only	CT-2087-A	Special Order	
19	20-0075	Energy Saver PCB	EN-6131	Yes	
19.1	20-1005	Jumper Pin	EN-6082	Yes	
20	20-0030	Front Upper Drip Tray Insert Panel - when purchasing, also request Hot Water Caution Label LP-7169 / 12-0001 to adhere to front of this Panel.	PL-1365	Yes	
20.1	12-0001	Hot Water Caution Label – Adhere to Front Upper Drip Tray Insert Panel.	LP-7169	Yes	
21	20-0035	Front PCB Cover	PL-1369	Yes	
22	20-1050	Front Upper Insert Panel - Charcoal	PL-1367-L00-CL-BIO	Yes	
	20-0045	Front upper Insert Panel – Blue	PL-1367	Yes	
23	20-0050	Silicon Button Key mat	PL-1370	Yes	
24	20-0055	Button PCB Insert Panel - Silver	PL-1368	Yes	
22	20-1030	WL100 Label – Front Upper Insert Panel - Charcoal	LP-0269-L00-00	Yes	

	20-0060	WL100 Label – Front Upper Insert Panel – Blue	LP-7292	Yes	
23	12-3150	Unit Rubber Feet – Counter Top Only	PL-1251-CN	Yes	
24	12-3170	Bottom Panel Counter Top Only	ST-8151-A	Yes	
25	NA	Compressor 120V / 60Hz	CO-9045	Special Order	
26	10-3003	Compressor Starter Relay	CO-9016	Yes	
27	10-5018	Compressor Overload	CO-9015	Yes	
28	12-3175	Solenoid Mounting Bracket Counter Top Only	ST-8152-B	Yes	
29	10-3067	Bulkhead Union ¼" x ¼" John Guest P/N PI1208S	PU-4028-A	Yes	
30	12-3100	Wire Condenser Counter Top Only	CO-9031	Special Order	
31	19-1069	Cold Tank Thermostat	CT-2070	Yes	
31.1	PL-0326	Cold Adjustment Cover Label	PL-0326-L00-00	Yes	
32	19-1090	Socket for Plug Connection	EL-0061-L00-00	Yes	
32.1	19-1015	Gasket for Power Socket	ST-8052	Yes	

33	EL-5053	Fuse Holder and Fuse 120V / 15A with One Wire	EL-5053	Yes	
33.1	10-3013	Fuse 120V / 15A	EL-5010	Yes	
34	12-5600	Red Heater and Compressor Switch	EL-5019-A	Yes	
35	12-5674	Back Panel – Silver Countertop Only	ST-8253	No	
36	10-7040	Silicon Tube 5/16" for Hot Water	PU-4064	Yes	
37	10-3062	JG LLDPE Tube - Blue 8mm John Guest P/N PE-0806-100M-B	PU-4014-A	Yes	
38	NA	JG LLD PE Tube - Blue O.D.1/4" John Guest P/N PE-08-BI-1000F-B	PU-4031-A	Purchase from John Guest	
39	NA	5/16" X 1/4" Reducing Elbow John Guest P/N PI211008S	PU-4007	Purchase from John Guest	
40	NA	1/4" Union Elbow John Guest P/N P10308S	PU-4008	Purchase from John Guest	
41	NA	1/4" Union Tee John Guest P/N P10208S	PU-4011-A	Purchase from John Guest	
25a	10-3017	Plastic PCB Support	EN-6059	Yes	
Not Shown	12-5252	Wire Harness Set	EL-5057-CN	Yes	
Not Shown	NA	Solenoid Valve Harness 1000mm	EL-5119	Special Order	
Not shown	NA	Wire Connector between Hot Tank and Thermostat	EL-5142	Special Order	
Not Shown	10-3007	Power Cord – 120V / 60Hz	EL-5001-B	Yes	